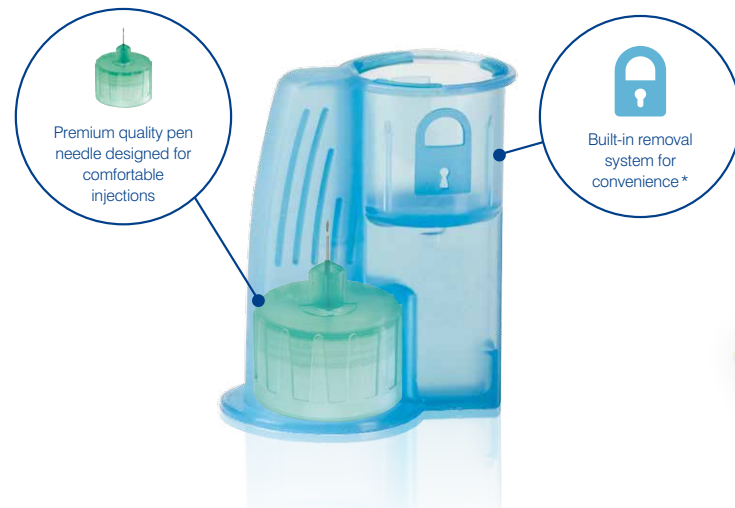


Make it convenient for patients with Unifine® Pentips® Plus



A unique pen needle with a built-in removal system designed for a better injection routine
Available in 4mm, 5mm, 6mm, 8mm and 12mm



We offer a range of educational information for your patients

Unifine® Pentips® Plus

For more information please visit us at owenmumford.com

Our accreditations include:

- ISO13485 Certification
- Medical Device Directive 93/42/EEC
- CMDCAS 13485 (Canadian Health Authority)
- Environmental Management Systems ISO14001
- The Queen's Awards for Enterprise: Innovation 2017
- RedDot Award 2015 Winner



reddot award 2015
winner

*For latest compatibility information please visit owenmumford.com/compatibility.

1. De Coninck et al. Results and analysis of the 2008-2009 insulin injection technique questionnaire survey. Journal of Diabetes 2 (2010) 168-179. 2. I.V. Miniskova et al. The risk of repeated use of insulin pen needles in patients with diabetes mellitus. Journal of Diabetology, February 2011; 1:1. 3. King L (2003) Subcutaneous insulin injection technique. Nursing Standard. 17, 34, 45-52. 4. Teresa Torrance. Effect of insulin needle reuse, size and site of injection on the risk of bending and breaking. Journal of Diabetes Nursing Vol 12 No 1 2008. * The used pen needle is secured in the interim container and must be placed in a sharps bin at the earliest opportunity.

All illustrations – © Copyright Owen Mumford 2015

© Copyright Owen Mumford 2017
UPP-NEEDLE-REUSE-EDU-HCP-LT/MCC/1017/04



57%

of injection pen users
do not change their
needle after
each use¹

What can happen when a pen needle is reused?

The effectiveness of injection
therapy in diabetes is helped
by good injection routine.
Reusing a pen needle can lead
to multiple complications^{1,2}

Key:



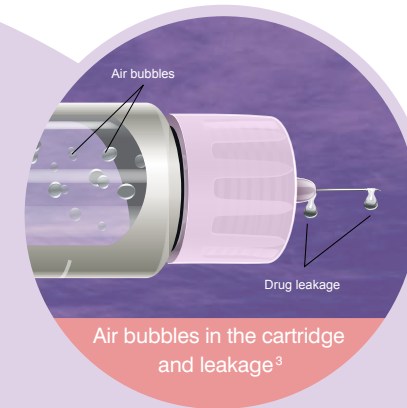
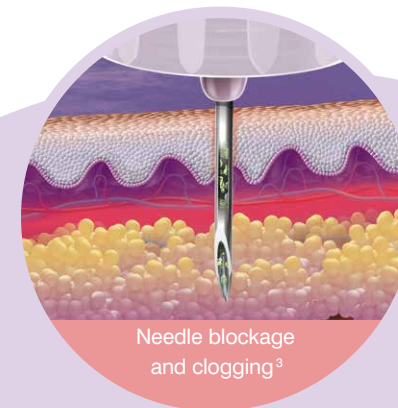
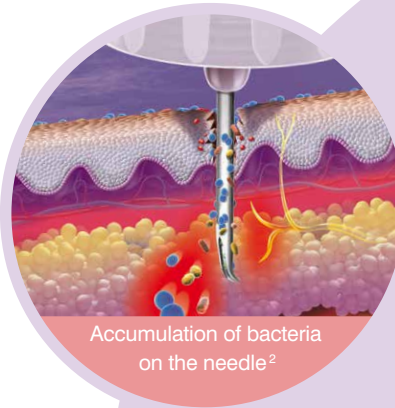
Epidermis layer



Dermis layer



Subcutaneous layer



What does this mean for your patients?

Dose inaccuracy

Caused by air
bubbles, leakage
and needle
blockage^{2,3}

Skin damage and painful injection

Caused by
reduced needle
integrity^{2,3}

Painful injection

Due to the tip of the
needle being broken
or bent, causing
a laceration of
the skin^{2,3}

Pen needle reuse can lead to poor glycaemic
control, infection and lipohypertrophy²

